

# user guide

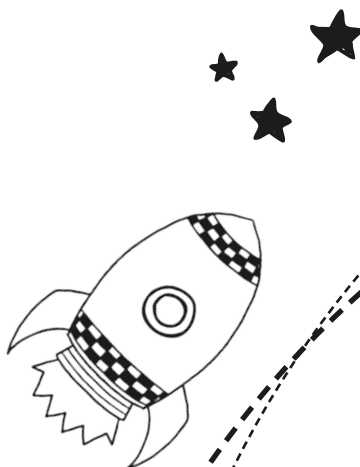




Our scheme of work for 2014 UK National Curriculum.

To help save you time we have put together complete unit packs for the 2014 curriculum. These packs have been developed by teachers and designed by our creative team to provide you with everything you need in one handy download.

Each unit pack includes six detailed lesson plans containing a lesson presentation, creative and differentiated lesson activities and resources, two home learning tasks, challenge cards, fact cards, an eye catching display pack and key vocabulary cards.



# What is in a planit unit?

Each individual unit contains...



**Six Lesson Packs**

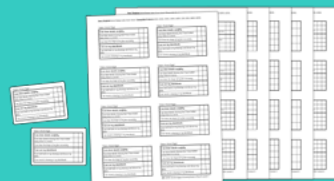
each containing...



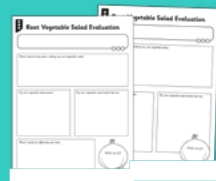
Lesson Plan



Lesson Presentation



Success Criteria Grids



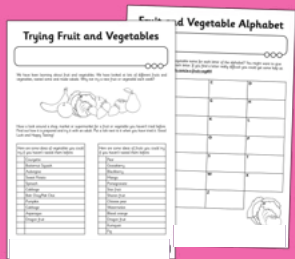
Activity Sheets



and sometimes...

Recipes, Instructions, Photo Packs & Games

Adult Guidance



Two Home Learning Tasks



Assessment Pack



Additional Resources Pack

- Display Banner
- Display Lettering
- Display Borders
- Display Posters & Photos
- Word Cards
- Word Mat
- Page Borders & Writing Frames
- Word Search (differentiated)



Fact Cards



Word Grid



Challenge Cards

# What goes into a planit lesson plan?

Each lesson pack contains a lesson plan as a pdf document. Text can be copied from the plan to your own planning format. The lesson plan is split into four main sections to help with your planning.

Unit Name

Lesson Name

**Aim:** The text in red is the 2014 NC aim. The purple text puts it into the context of the lesson and the green text gives you a child friendly aim for the lesson.

**Resources:** Any resources you need will be listed here.

**Preparation:** Here you will find everything that needs preparing before the lesson.

Sensational Salads: Root Salad Evaluation

<p><b>Aim:</b> To explore and evaluate a range of existing products in the context of tasting salads made mainly from root vegetables. To use the basic principles of a healthy and varied diet to prepare dishes. I can explore and evaluate existing products. I can explain why I need to eat fruit and vegetables.</p>	<p><b>Success Criteria:</b> I can taste salads made from root vegetables and explain what I like about them and how they could be improved. I can say which salad I liked the most and why. I can explain that it is important to eat at least 5 portions of fruit and vegetables a day to help give me energy and keep my body healthy. I can explain that fruit and vegetables contain lots of vitamins and minerals.</p> <p><b>Key/New Words:</b> Evaluate, vegetable, root, salad, texture, smell, appearance, taste.</p>	<p><b>Resources:</b> Lesson Pack A selection of salads, bought or homemade, made mainly from root vegetables, eg beetroot salad, potato salad, coleslaw, carrot and satana salad. (Children will vote on their favourite and make them next lesson, recipes for these salads are provided). Plastic tasting spoons.</p> <p><b>Preparation:</b> Food Mat Activity Sheet - 1 per pair Salad Evaluation Activity Sheet - 1 per child</p>
--	---	---

**Prior Learning:** Children will have been introduced to different fruits and vegetables in lesson 1.

**Learning Sequence**

<p><b>Warm Up:</b> When children start the lesson they will have a <b>Food Mat Activity Sheet</b> on their desk. Quickly, they have to circle all of the food they think is healthy.</p>	
<p><b>Eatwell Plate:</b> Produce the <b>eatwell plate</b> and discuss where the foods on their mat belongs on the plate. Why is it important to eat vegetables? Explain that eating plenty of fruits and vegetables may help reduce the risk of many diseases, including heart disease, high blood pressure, and some cancers. Eating plenty of fruit and vegetables also helps us to go to the toilet which is also good for us! (Note these issues may be sensitive for some children). Re-look at the eatwell plate and highlight the large portion of fruit and vegetables that should be eaten daily, at least five a day. Explain that five portions a day seems like a lot but today they are going to look at clever ways to eat their five a day. Show a selection of different salads and explain that they are all made using some of the root vegetables that they learnt about last lesson.</p>	
<p><b>Taste and Evaluate:</b> Children use tasting spoons to sample the different salads and then write a short evaluation about the salad using the <b>Salad Evaluation Activity Sheet</b>.</p>	
<p><b>Tally Chart:</b> Explain that next week they will be making their favourite root vegetable salad so you need to know which salad was the classes' favourite. Complete a tally chart to record their votes. (As the children vote, invite individuals to explain why they chose the salad as their favourite. This will allow children to verbally evaluate the existing products.)</p>	

**Taskit:**

**Rhyme:** Can you think of a rhyme to help you remember to eat at least five portions of fruit and vegetables every day? For example, 'Five a day, five a day, we all know it's the healthy way!'

**Sortit:** Can you use the **Healthy Eating Plate Sorting Activity** to sort the foods into their food groups?

**Tallyit:** Can you create your own tally chart and record other people's choices of favourite fruit or vegetables?

**Readit:** Read 'Vegetable Glue' by Susan Chandler. Discuss the issues in the books around why it is good to eat vegetables.

**Prior Learning:** Anything that would be helpful for the children to have already learnt will be noted here.

Subject | Key Stage | Unit Name | Lesson Name | Lesson Number

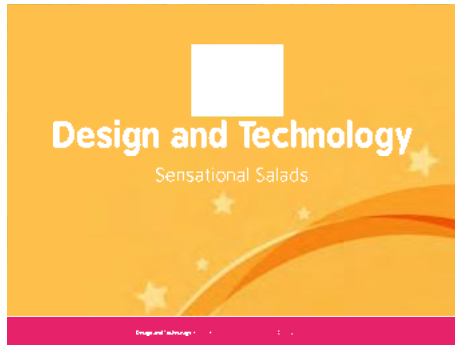
## Lesson Plan Icons

Duration of Activity	Short 	Medium 	Long 	Individual	Talk Partners
Differentiation	Low 	Medium 	High 	Pairs	Mental & Oral Starter (Math units only)
Assessment		Or look for green text in the learning sequence.		Group Work	Teacher Led
				Whole Class	

# What goes into a plan*it* lesson presentation?

Each lesson pack has a lesson presentation, available as a PowerPoint or interactive whiteboard file. The presentation frames the learning sequence as outlined on the lesson plan, providing information, posing questions and setting tasks.

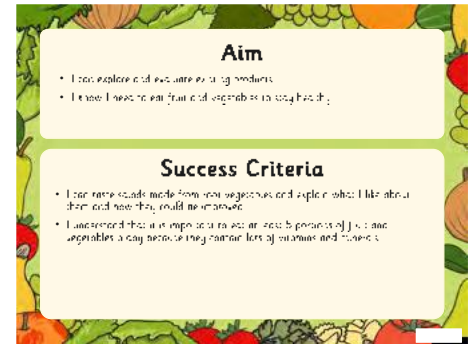
Each presentation has the same 3 slides at the beginning;



**Slide One:** Plan*it* title slide with the subject and the unit title. The footer of the slide will match the lesson plan.



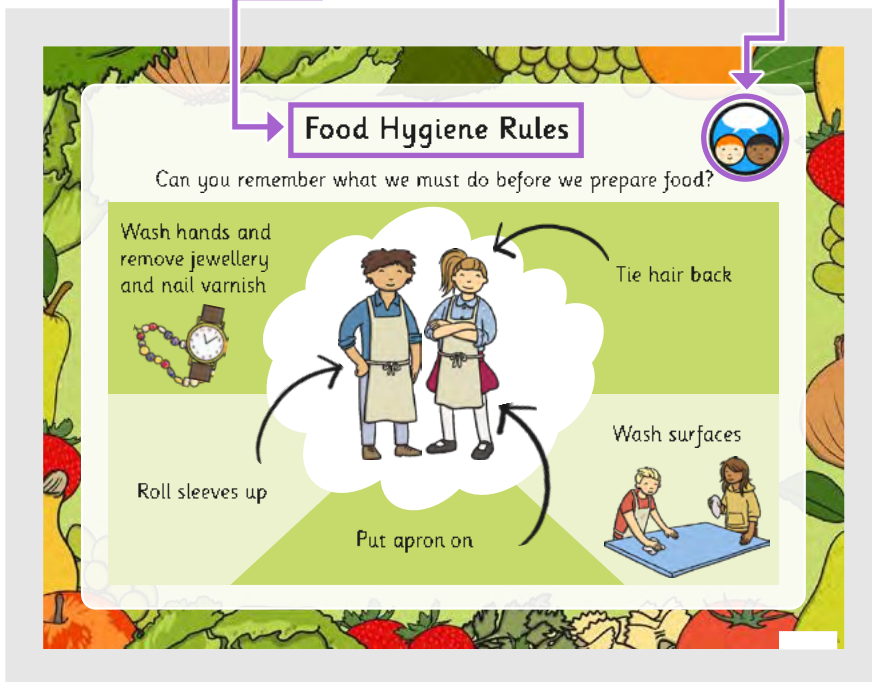
**Slide Two:** Child friendly title slide. You might choose to start your lesson with this slide.



**Slide Three:** Child friendly aim and success criteria.

Slide titles in the lesson presentation correspond with the bold titles in the learning sequence in the lesson plan.

You'll find the corresponding icon in the top right hand corner. There is a key to the icons at the bottom of the page.



Every presentation will repeat the success criteria slide at the end of the presentation to facilitate the children's assessment.

## Lesson Presentation Icons



Individual



Group Work



Talk Partners



Assessment



Pairs



Whole Class



Mental & Oral Starter  
(Math units only)

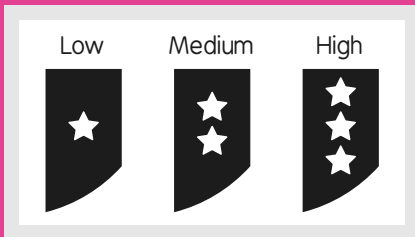


# Our activity sheets.

Our activity sheets are provided in .pdf format and .doc format.

Differentiation is indicated by the star system.

## Activity Sheet Icons



★
★
★
**Root Vegetable Salad Evaluation**

What I found tricky about making my root vegetable salad...

My root vegetable salad tasted...

My root vegetable salad looked like this.

What I would do differently next time...

Marks out of 5

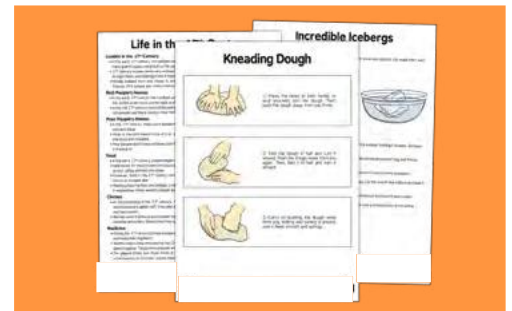
... The blank box is designed for the child to write the lesson aim in. An editable version with the aim already typed is also provided. The three circles are for optional self or teacher assessment.

e.g. traffic light colours or shading 1, 2 or 3.

... The footer will let you know which unit and lesson the activity sheet is from.

# What is *planit* adult guidance?

Adult guidance provides teachers with background knowledge and information to assist with the lesson. The type of guidance in the pack will depend on the lesson content



# What is in the *planit* assessment pack?

We have put together some ready made assessment tools for each unit. More information and ideas on how to use these tools can be found in the Assessment Guidance.

**Assessment Spreadsheet**

**KWL Grid**

**Jigsaw Targets**



Be kind to yourself, you're doing wonderfully.

